

Survey: Pupil Survey - March 2019

Report By: All Respondents

Difference from: All Respondents
 34,757 Pupils from 36 Secondary Schools within the 'All Data' QDP national benchmark.
 Report style: Combined Graphical, Rated, Questionnaire order
 Filtered by: All Respondents
 Respondents: 105

Example 5 of 5: Graphical Report

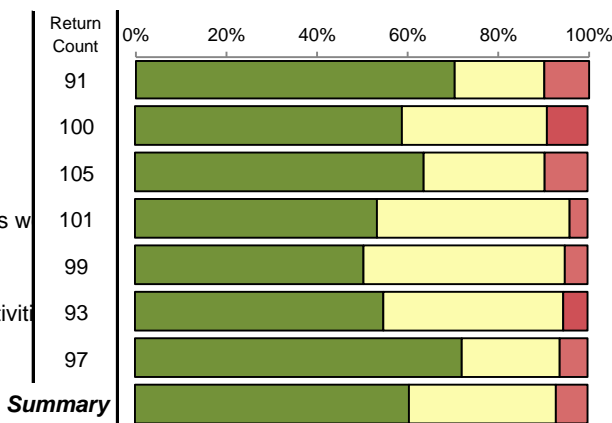


Description of chosen sample be it All Respondents, school, subject, class, gender, age etc. Difference from chosen benchmark, sample details and the title of the survey.

Shows strengths and areas of concern in your school against all other similar profiled schools in QDP National Benchmark who have asked the same question (A = strength; D = concern).

The School

- 1 The classrooms are clean and tidy
- 2 Students in this school behave well
- 3 I know what to do if I need help
- 4 The school deals with respect and wellbeing issues w
- 5 I feel safe at school
- 6 The school provides a good range of additional activit
- 7 I enjoy taking part in additional activities

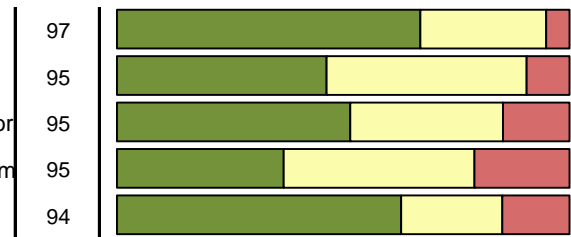


Strongly Agree	Agree	Disagree	Strongly Disagree	Not Answered
64	18	9	0	14
59	32	6	3	5
67	28	8	2	0
54	43	2	2	4
50	44	5	0	6
51	37	3	2	12
70	21	4	2	8
415	223	37	11	49
56.5%	30.3%	5.0%	1.5%	6.7%

Rating	Difference	Agree%	Distance Travelled	Quartile	External Benchmark
80		90	-8	C	-3
75		91	-4	C	+6
77		90	-13	D	-16
75		96	-8	D	-2
73		95	=	C	+2
75		95	-5	B	+2
83		94	=	B	+10
77		93	-5	C	=

Questions arranged in questionnaire order. Can also be run under inspection framework headings.

- 21 Feedback on my work is helpful
- 22 My teachers encourage me to behave well and to wor
- 23 My homework helps me to understand and improve m
- 24 I am making good progress



Strongly Agree	Agree	Disagree	Strongly Disagree	Not Answered
65	44	12	2	10
49	35	14	6	10
59	21	12	2	11
65	44	12	2	10
61.9%	41.9%	11.4%	1.9%	9.5%

Rating	Difference	Agree%	Distance Travelled	Quartile	External Benchmark
68		91	-5	C	+7
68		85	-4	D	-5
58		79	+7	C	-4
74		85	=	D	-12

Shows the Distance Travelled from last years survey results.